 Central Bank Center

 Central Bank Center  


 **Central Bank Center**





# Central Bank Center

## THE CENTER OF IT ALL

Central Bank Center's goal is to create and execute unparalleled events from conception to completion. Central Bank Center offers a team of experts dedicated to world-class hospitality and service. With the convention center's unique history and amenities built for the future, the new \$300 million expansion features 100,000 square feet of contemporary exhibit space, 16 meeting rooms, 11,000 square feet of flexible event space, and a 24,300-square-foot ballroom. New sustainability details were awarded the Prestigious LEED Silver Certification. The expansion (completed in 2022) also includes many new elements that makes the convention center one of the most high-tech, user-friendly meeting and event spaces in the state.

Located in the heart of downtown Lexington—within easy walking distance of over 1,200 hotel rooms, 75 restaurants, numerous theaters, shops, and galleries—the distillery district; and a wide variety of nightlife—the Central Bank Center offers smalltown charm with big city amenities.

The iconic Rupp Arena, located inside Central Bank Center and home to the University of Kentucky basketball program, offers seating for up to 20,500 with approximately 50,000 square feet of club space and expanded concourses. Nearby, the historic 900-seat Lexington Opera House, built in 1886, is a jewel-box setting for concerts, touring Broadway shows, or your next meeting or special event.

With a pedestrian connection to nearby hotels, an outdoor park, plaza, and water features, these venues together create a vibrant, lively experience for residents and visitors alike.

We invite you to discover why meeting planners and attendees alike consistently book their events with Central Bank Center. To discover how our commitment to world-class service aligns with your event goals, please contact us [sales@centralbankcenter.com](mailto:sales@centralbankcenter.com)

[CentralBankCenter.com](http://CentralBankCenter.com)







# STATS AND FACILITY AT-A-GLANCE



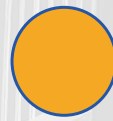
EXHIBITION  
99,444 SF



MEETING  
24,116 SF

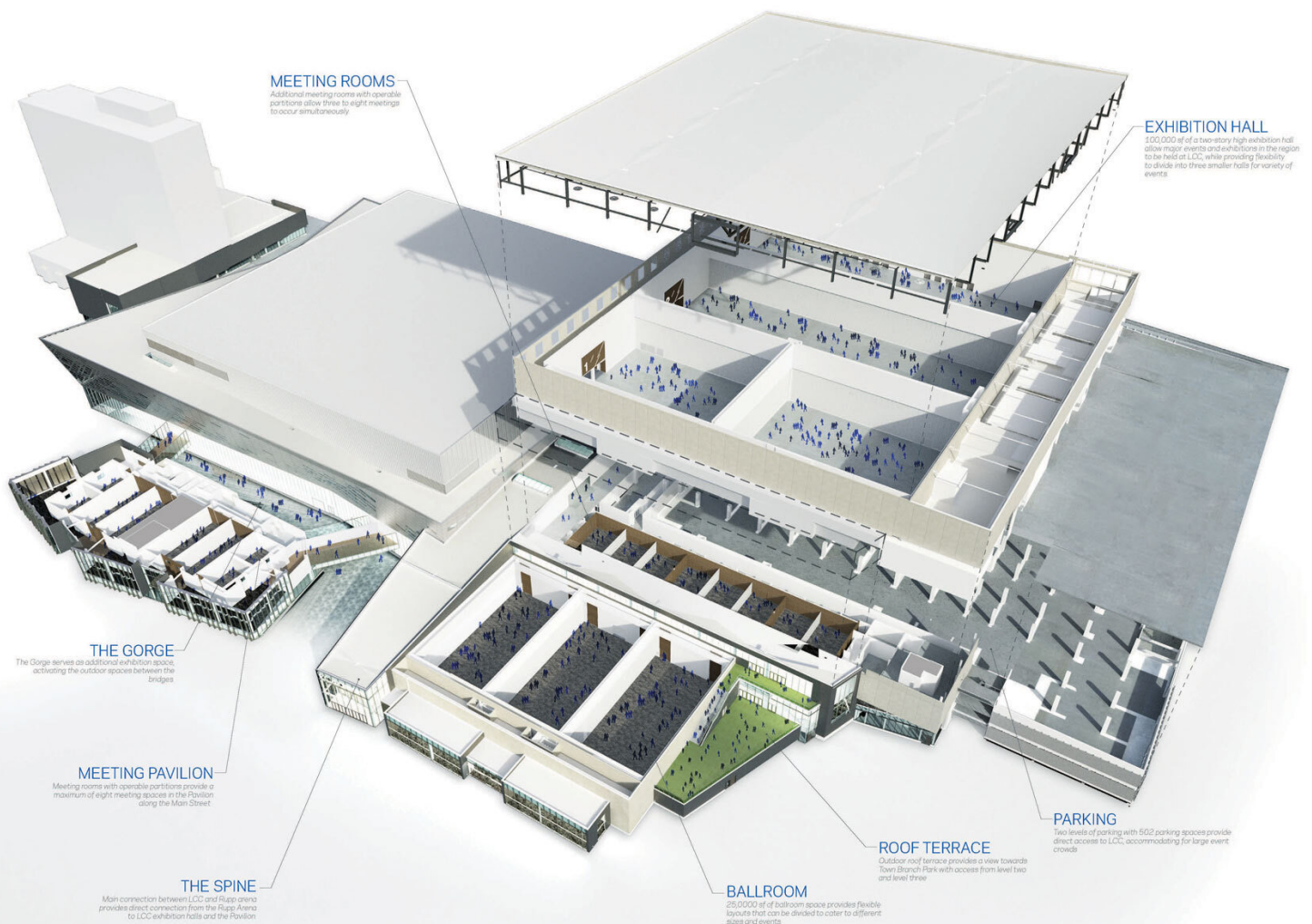


BALLROOM  
24,330 SF



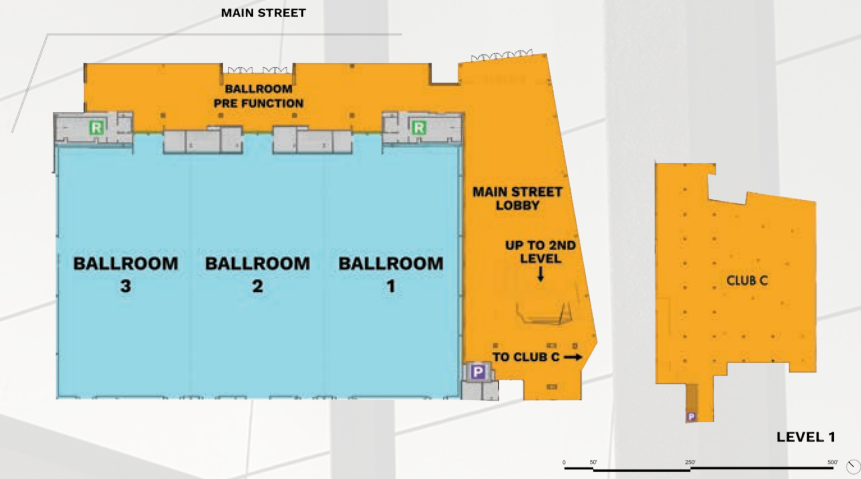
HOSPITALITY  
50,431 SF

PARKING  
1,800 SURFACE

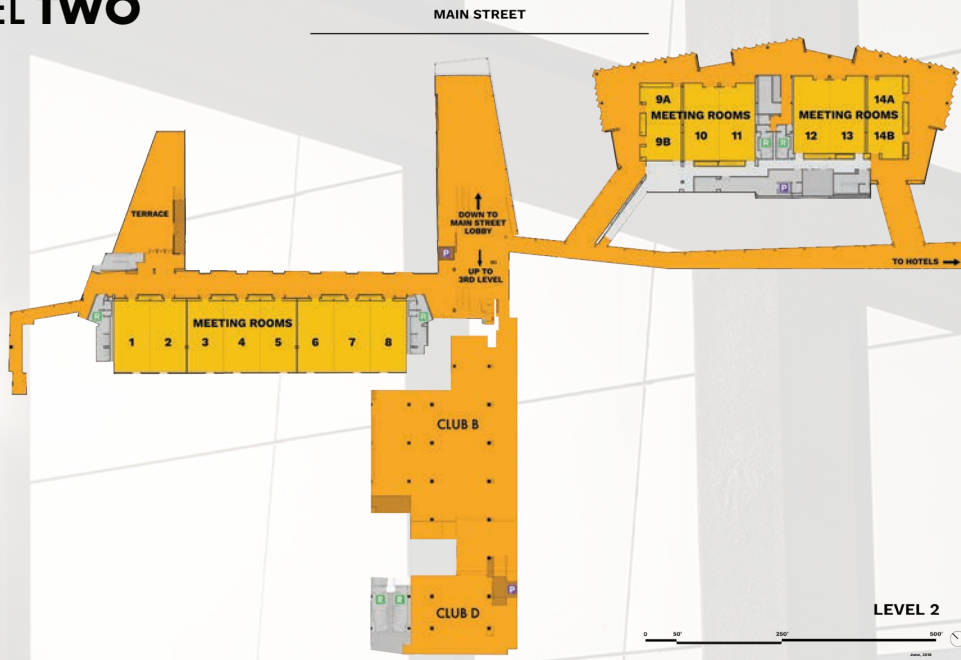




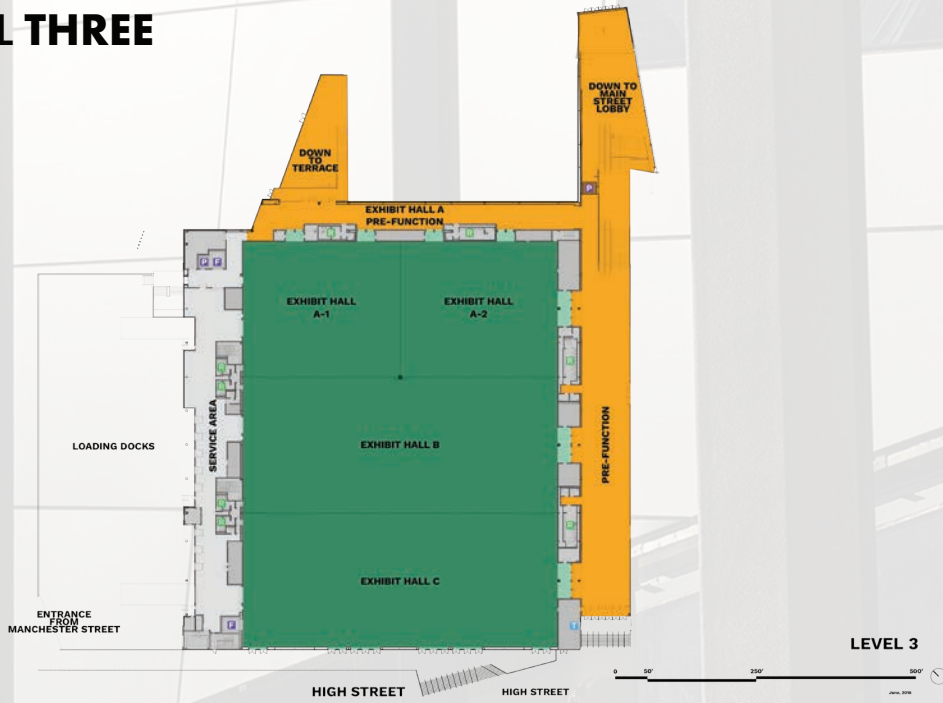
# LEVEL ONE



# LEVEL TWO



# LEVEL THREE



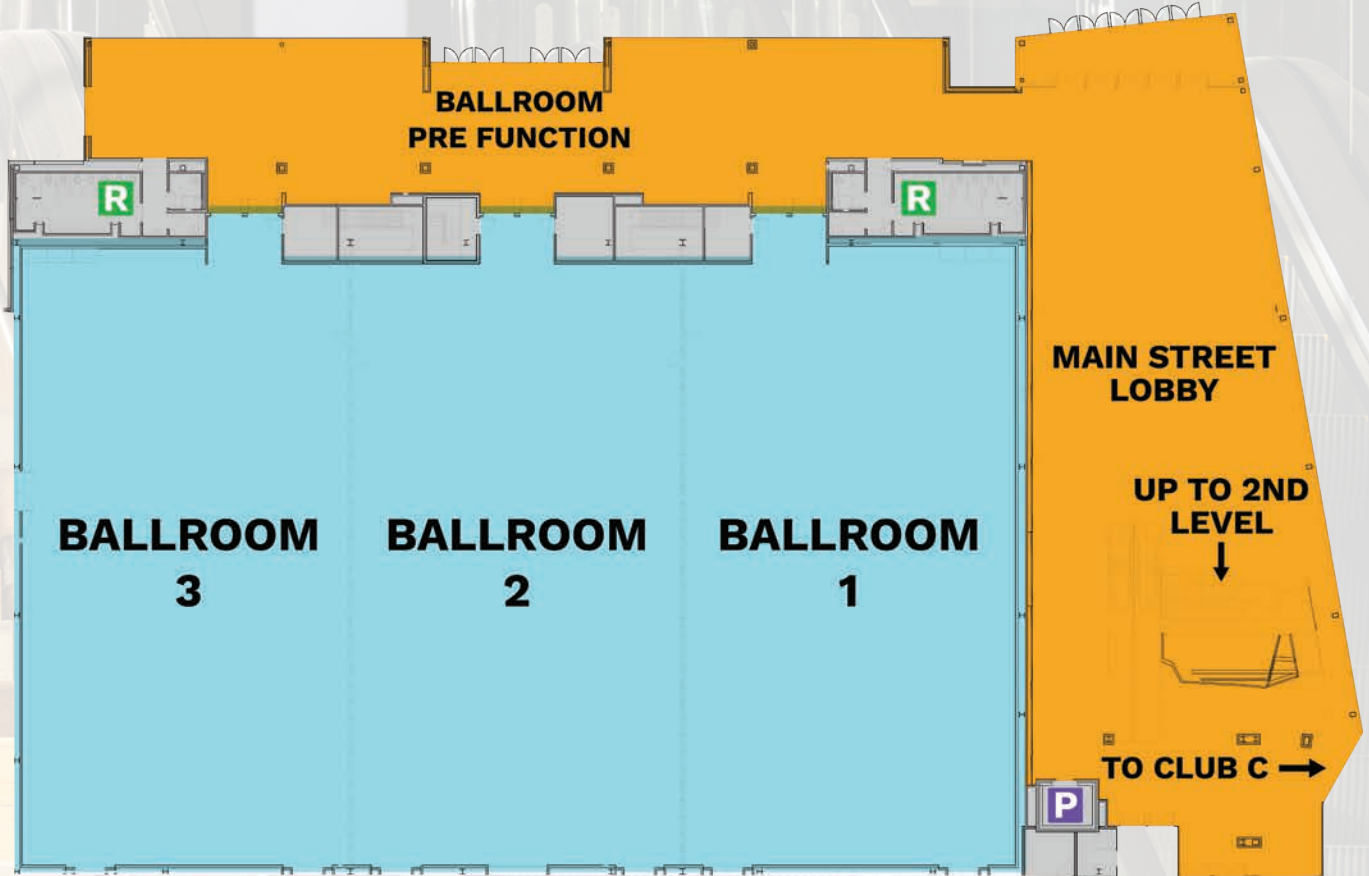






# LEVEL ONE

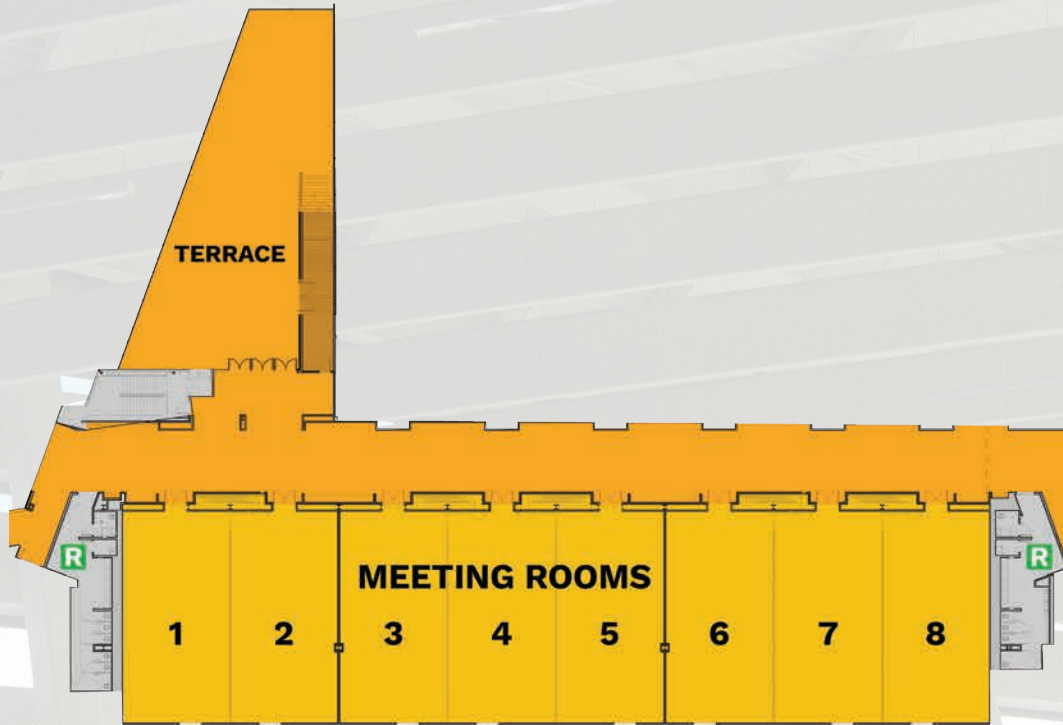
MAIN STREET



ROOM	SQ FT	CEILING HEIGHT	DIMENSIONS	EXHIBITS (8 X 10)	EXHIBITS (10 X 10)	THEATRE	CLASSROOM	ROUNDS OF 10/8
MAIN ST LOBBY	4,500	-	98'6" x 46'	-	-	-	-	-
BALLROOM PREFUNCTION	5,100	-	170' x 30'	-	-	-	-	-
BALLROOMS ALL	24,330	24'7"	200'8" x 121'3"	151	131	2,710	1,760	1,760/1,408
BALLROOM 1	8,133	24'7"	66'8" x 122'	51	42	784	570	500/400
BALLROOM 2	8,012	24'7"	66'1" x 121'3"	51	42	784	570	500/400
BALLROOM 3	7,907	24'7"	65'10" x 121'6"	51	42	784	570	500/400



# LEVEL TWO



ROOM	SQ FT	CEILING HEIGHT	DIMENSIONS	THEATRE	CLASSROOM	ROUNDS OF 10/8
MEETING ROOM 1-8 LOBBY	4,369	-	257' x 17'	-	-	-
TERRACE	2,350	-	-	-	-	-
MEETING ROOM 1	1,723	12'7"	29'6" x 58'6"	222	106	120/96
MEETING ROOM 2	1,723	12'7"	29'6" x 58'6"	220	106	120/96
MEETING ROOM 3	1,723	12'7"	29'6" x 58'6"	220	106	120/96
MEETING ROOM 4	1,723	12'7"	29'6" x 58'6"	222	106	120/96
MEETING ROOM 5	1,723	12'7"	29'6" x 58'6"	222	106	120/96
MEETING ROOM 6	1,723	12'7"	29'6" x 58'6"	220	106	120/96
MEETING ROOM 7	1,723	12'7"	29'6" x 58'6"	222	106	120/96
MEETING ROOM 8	1,723	12'7"	29'6" x 58'6"	222	106	120/96



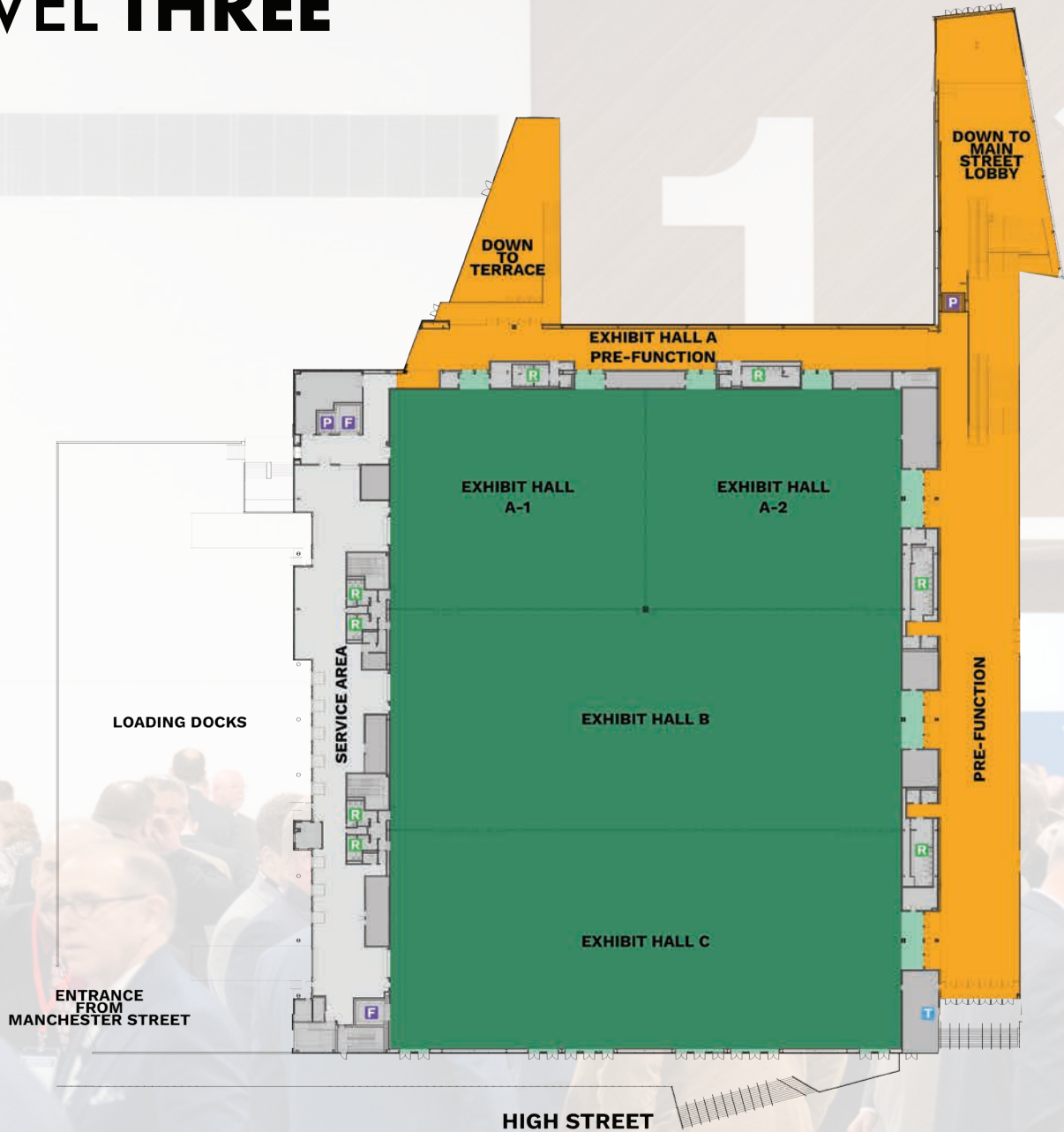
# LEVEL TWO



ROOM	SQ FT	CEILING HEIGHT	DIMENSIONS	THEATRE	CLASSROOM	ROUNDS OF 10/8
MEETING ROOMS 9A-14B LOBBY	7,450	14'7"	257' x 17'	-	-	-
MEETING ROOM 9A	843	14'7"	28'10" X 30'	103	55	50/40
MEETING ROOM 9B	843	14'7"	28'10" X 30'	84	55	50/40
MEETING ROOM 10	1,740	14'7"	29' x 60'	224	106	100/80
MEETING ROOM 11	1,740	14'7"	29' x 60'	224	106	100/80
MEETING ROOM 12	1,740	14'7"	29' x 60'	224	106	100/80
MEETING ROOM 13	1,740	14'7"	29' x 60'	224	106	100/80
MEETING ROOM 14A	843	14'7"	28'10" X 30'	98	54	60/48
MEETING ROOM 14B	843	14'7"	28'10" X 30'	98	52	60/48



# LEVEL THREE



ROOM	SQ FT	CEILING HEIGHT	DIMENSIONS	EXHIBITS (10 X 10)	THEATRE	CLASSROOM	ROUNDS OF 10/8
Exhibit Hall All	99,444	30'1"	358'3" x 277'7"	552	-	-	-
Exhibit Hall A1	16,523	30'1"	119'2" x 138'8"	91	1,664	972	1,080/864
Exhibit Hall A2	16,523	30'1"	119'2" x 138'8"	91	1,664	972	1,080/864
Exhibit Hall B	33,215	30'1"	119'2" x 277'7"	185	3,744	2,397	2,300/1,840
Exhibit Hall C	32,986	30'1"	118'10" x 277'7"	175	3,744	2,397	2,300/1,840







# RUPP ARENA<sup>®</sup>

at  Central Bank Center

**THE GREATEST TRADITION WITH ULTIMATE FLEXIBILITY**

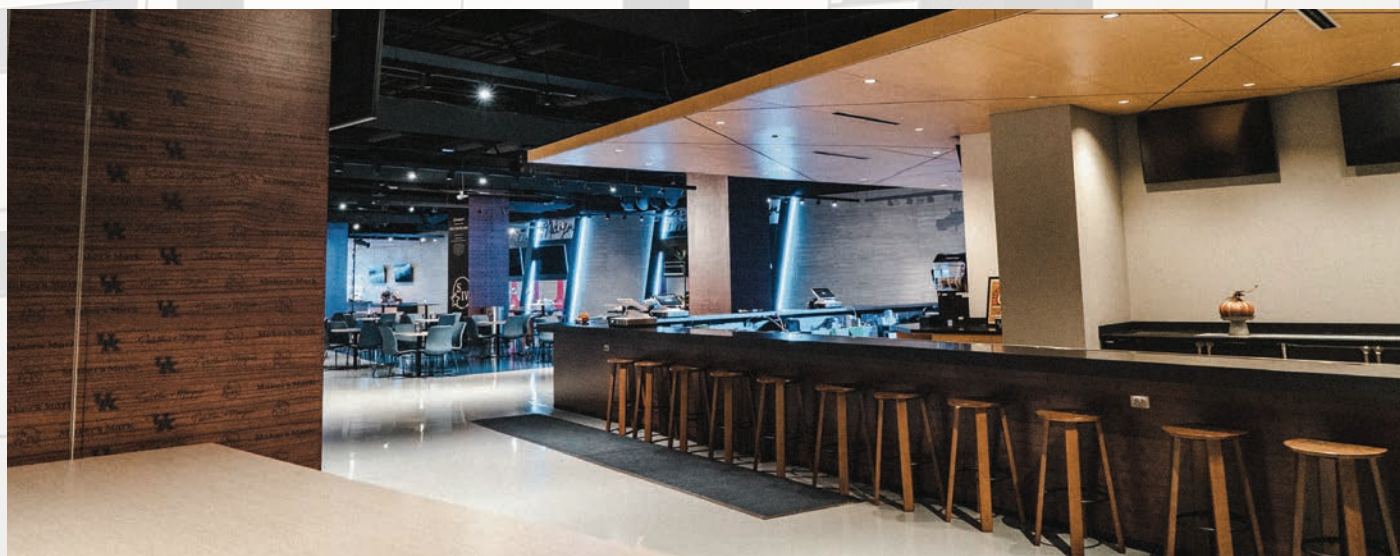


Rupp Arena, the world renowned basketball and entertainment venue, can be the setting for general sessions to accommodate groups ranging from 2,500 to 20,000 in attendance. Three well-appointed Rupp Club Hospitality spaces are adjacent to the arena and can provide up to 35,000 sq feet of versatile meeting, banquet or support space for your event.

ROOM	SQ FT	CEILING HEIGHT	DIMENSIONS	SEATS
WILDCAT WHISKEY CLUB	9,628	12'8"- 17'3"	116' x 83'	204
CLUB C	14,190	8'8"- 24'10"	129' X 110'	272
CLUB D	3,599	11'4"- 17'3"	61' X 59'	95



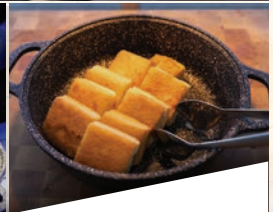
# RUPP CLUB HOSPITALITY





# CENTRAL BANK CENTER CATERING PARTNER

**HARDWOOD & OAK**  
HOSPITALITY



## A WINNING PARTNERSHIP

Central Bank Center is proud to have  
Hardwood & Oak as their food & beverage hospitality brand!



## ONE BRAND, ONE GOAL & A UNIQUE FOOD STORY

Our collaborative approach to building a hospitality brand aims to elevate the best of our partner's organizational goals through the lens of impeccable hospitality. The brand communicates our joint dedication to delivering inclusive, welcoming hospitality and satisfying, high quality food that pays off our brand's value proposition.

Levy creates a truly unique food and hospitality experience that includes concepts, menus, and service styles with every partner. It's what we call our Food Story. It is collaboratively crafted to be the most strategic, meaningful story to engage guests and inspire our operational leaders and team members to bring something special to our guests each and every day.

 KY Hardwood & Oak

 @kyhardwoodandoak

 @hardwoodandoak



# CENTRAL BANK CENTER EXPOSITION SERVICES



## ONE SOURCE FOR EVERYTHING.

Let us make your event planning easy.

## UNSURPASSED SUPPORT SERVICES FOR YOUR EVENT

LEXPO offers support services for trade shows, conferences, conventions, corporate meetings and special events. Conveniently located right on the Central Bank Center property, LEXPO provides everything from furniture fixtures and accessories to computerized floorplans and layouts. Your turn-key source for anything and everything.

Serving Central Bank Center and off-site event locations across Central Kentucky, LEXPO Exposition Services provides all of your presentation needs, and offers a range of services for exhibitors to ensure you have the most productive tradeshow experience possible.

[CentralBankCenter.com/Lexpo](http://CentralBankCenter.com/Lexpo)



VISIT US ONLINE:  
[CENTRALBANKCENTER.COM](http://CENTRALBANKCENTER.COM)

BOOKING INQUIRIES:  
[SALES@CENTRALBANKCENTER.COM](mailto:SALES@CENTRALBANKCENTER.COM)

SCAN HERE TO TAKE  
A VIRTUAL TOUR



**Central Bank Center**  
LEXINGTON, KY 40507